



THE CANOPY

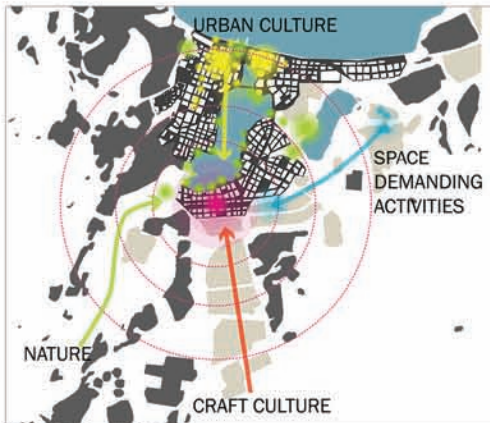
Today Jönköping is a bustling and vibrant city where ages, lifestyles, cultures, traditions and innovation come together in a natural setting defined by the beauty of lakes and forests. The new station becomes an ecosystem of activities, functions, uses that integrate seamlessly in year-round conditions.

The station is designed to become the new living room of Jönköping where the boundaries between inside and outside are blurred, where the drama of arrivals and departures is softened by the forest coming into the station through a wooden canopy and architectural sculptures that remind us of the historic matchsticks industry, and local traditions brought into the 21st century with a creative use of lighting, interactivity and new materials. Here the unexpected happens, people linger, stay, socialize, and engage with the space and by extension with the city in a convivial way.

DESIGN INTENT

The philosophy behind the design is based on the connection between the city of Jönköping and surrounding nature demonstrated through the use of a light and playful wooden canopy structure, partly transparent and open towards the City and Munksjön. The matchstick structure pays homage to the city's past as Tändsticksstaden, famous matchstick capital of Sweden.

Nature is calming and soothing. Lush urban green is a perfect match for a busy transit hub. Evidence is mounting on the how effective urban green is by calming and refocusing the stressed and hyper busy mind. With trees we bring immediate visual exposure of nature – and flowering plants and shrubs draw in birds and insects and thus sounds of nature. This complements the organic wood structure 'our living room in the forest' and makes it truly come to life.



URBAN RELATIONS

The station is located where four types of urbanlandscapes meet. The animated, cultural and social city center in the north. The activity zones in the south with it's creative potential. Green connection in the west, connecting to sport, nature and recreation.



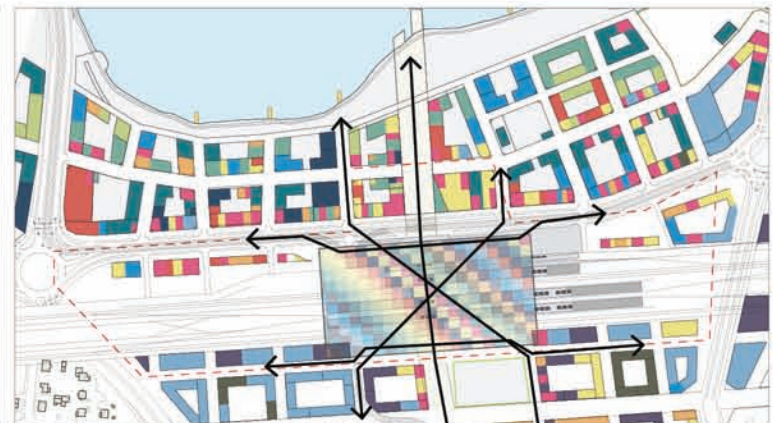
REGIONAL URBANISATION

The regional urbanisation in context to the station as a new node in the city. The station may draw these forces closer to Munksjön and Rocksjön.



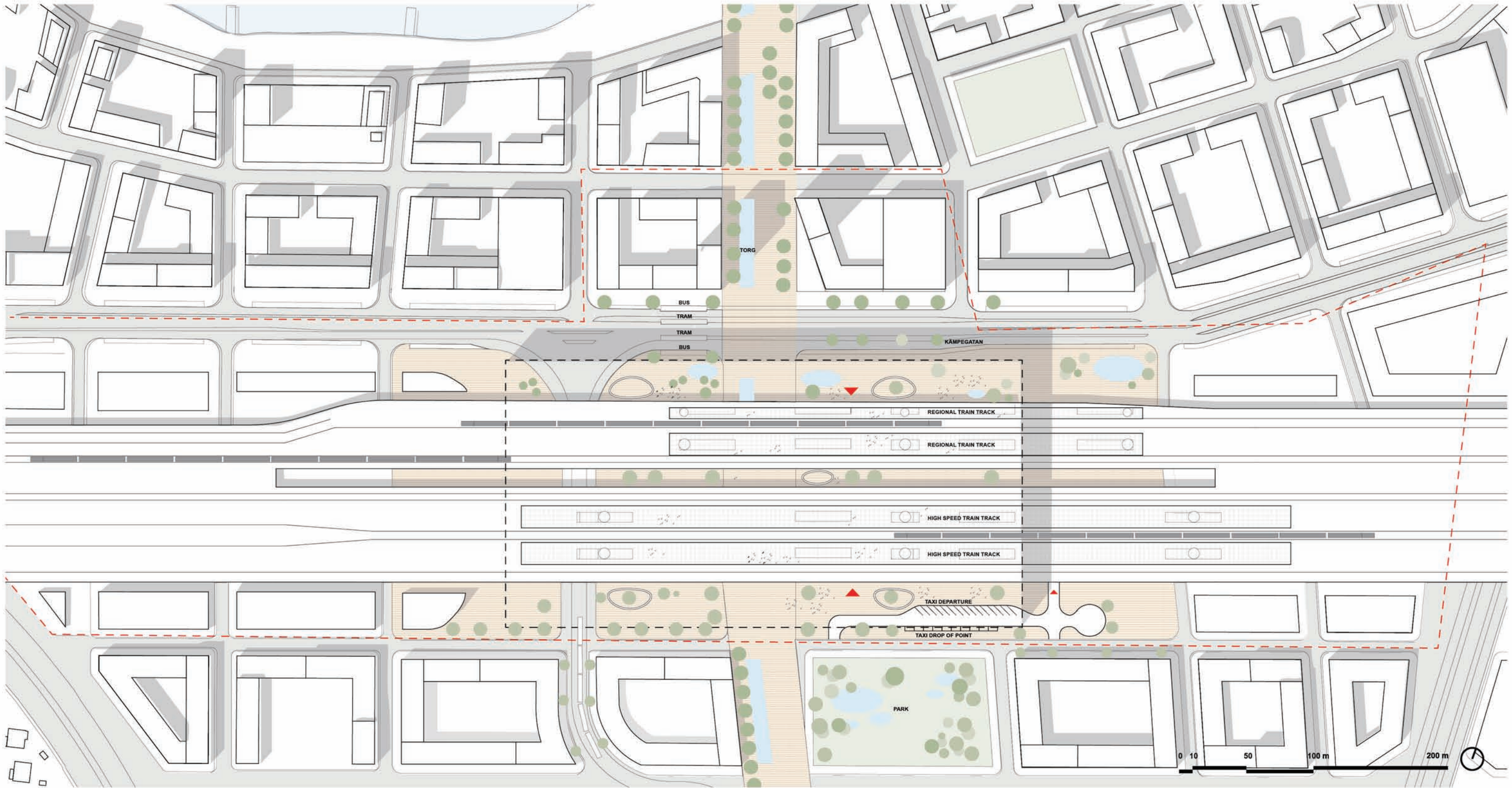
POLYCENTRALITY

The station will create a new complementary node in the southern part of the city, allowing the city to expand around the lake, offering new functions, meaning and identity to the city and region.



A HYBRID STATION PRODUCING THE IMAGE OF CITY

The city has clear ambitions to create architecture with multifunctionality and hybrid uses in the Södra Munksjön area.



GREEN DESIGN

Our "metrocanopy" is inherently 'green', partly through the use of natural materials such as wood but also through the incorporation of nature into the design. Local tree species such as ash, pine and oak will be planted within the areas where the canopy dips down and is anchored into the streets, the tracks will come to life through the planting of local plants.

A habitat that today is increasingly rare is open sand that is warmed by the sun. This is a habitat that the tracks could re-vitalise and plant species that today vulnerable could be supported - such as Fågelary that has been observed in the area. There are other species of plants and mosses that also are associated to this habitat. This opens a very interesting possibility of supporting biodiversity without creating nectar-rich habitats that may be harmful to bees."

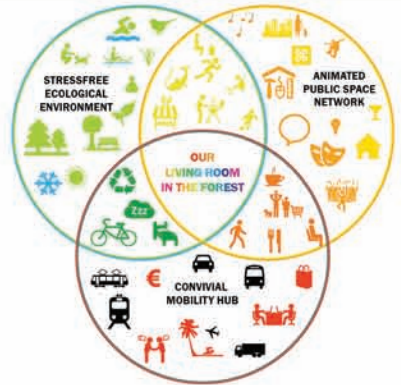
The transparent covering can be integrated with solar panels on the south side, offering the station the possibility of generating energy for its own use, but also for the neighborhood.

ORGANISATION, FUNCTION & DESIGN

The use of wood and curved, irregular surfaces helps absorb and diffuse noise from the train and other traffic and adds to a more peaceful atmosphere, a place where people are invited to linger and relax.

Transparency and openness helps sunlight reach below the cover and onto the platforms and other areas, ensuring that all areas of the station have access to light with entrance areas on all sides, making the spaces above as well as below the viaduct feel safe and secure for all users.

At the upper level visitors are invited into the matchstick forest through long, circular ramps which take them to the top of the canopy and onto a walkway, at once opening up to the lakes and the forests around Jönköping. Here, the visitors can enjoy a drink or simply walk around admiring the view over the lakes, the forests and the city.



PROXIMITY & DIVERSITY

The lower level of the station will host a number of different uses including ticket offices, shops, cafes and restaurants. It is where other modes of transportation connect with and within the train station. It has been designed to favour easy access for all users and a good flow of both pedestrian and motorized traffic in and around the station through the use of wide sidewalks, large entrance areas and transparency which offers excellent visual orientation.



URBAN ANIMATION IN LUMINOUS FOREST AMBIANCE

A lush, luminous and wind protected forest ambiance is created in high synergy with the animated urban network of public spaces and vibrant ground floors. This urban forest creates an attractive interaction between the lively street life, the green network and blue connections. Urban life and green tranquility is mixed and manifesting the unique life qualities of Jönköping.

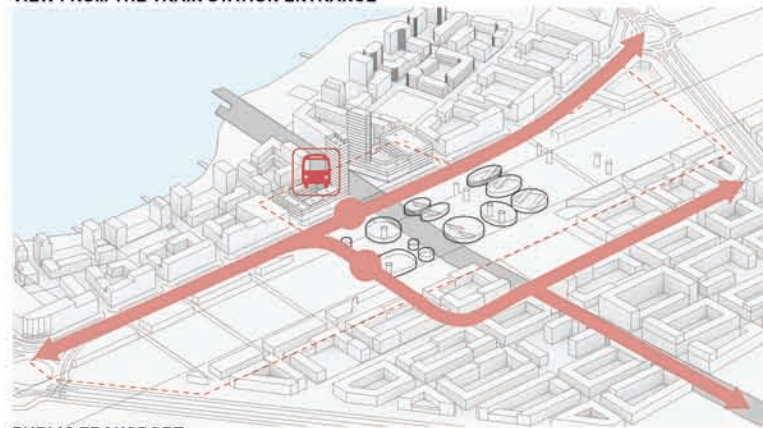


PROGRESSIVE PLACEMAKING STRATEGY

Placemaking activities reveals the neighbourhood already today, contributes to the creation of an identity and makes the place into a testsite where more innovative strategies for architecture and public life can be tested before integrated into the future city. By creation of areas where the future urban life may develop already today, we ensure that the stationarea will be animated and active from the first day.

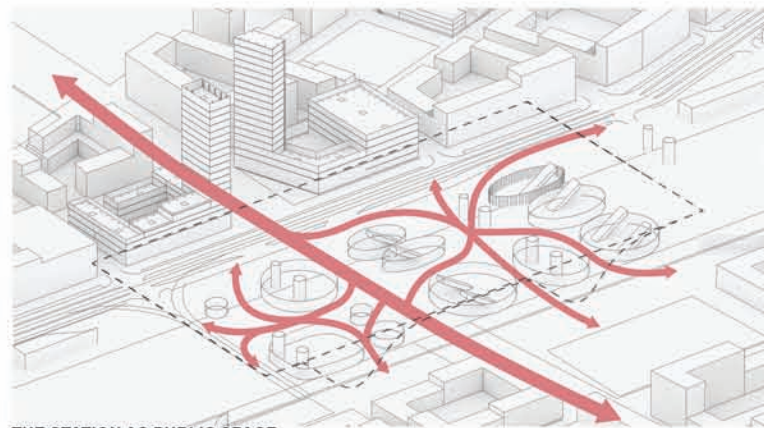


VIEW FROM THE TRAIN STATION ENTRANCE



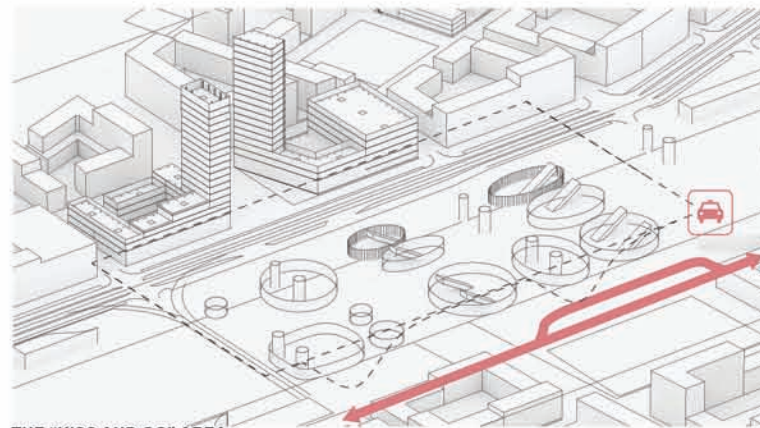
PUBLIC TRANSPORT

This link becomes an interacting part of the building and its functions. Way-finding in between the train platforms and bus stops is perceived as clear and direct as changing platforms for another train. The tramway line is proposed to be slightly moved to the west in order to preserve the central axis towards the city for pedestrian use.



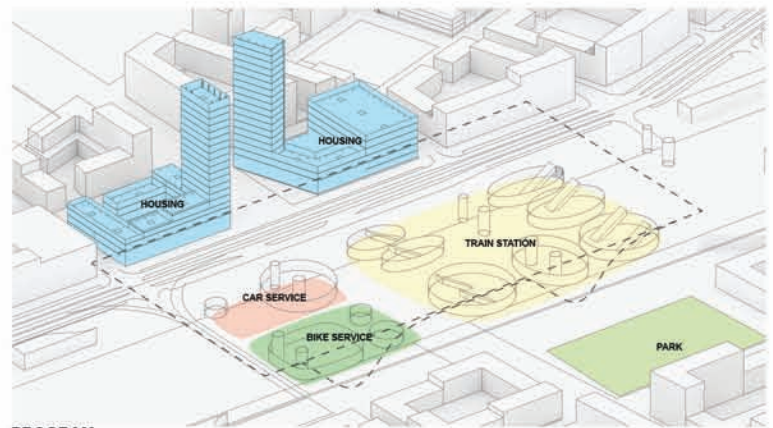
THE STATION AS PUBLIC SPACE

The pedestrian connections inside the station is as porous as a market and creates linkages in all directions. Making the station highly integrated in the surrounding area, where functions and public space may spill over to the surrounding architecture and areas. A central north south connection, creates a super urban connections in between the station and the waterfront.



THE "KISS AND GO" AREA

Taxis as well as the "kiss and go" area is located in the southern part of the station. Functions that take advantage of this flow are also located here. Such as bicycle parking, rentable and service bicycle hub, parkinggarage, giftshops, gatheringplace for taxidrivars, smart city taxi booking systems, codriving pickup places etc.

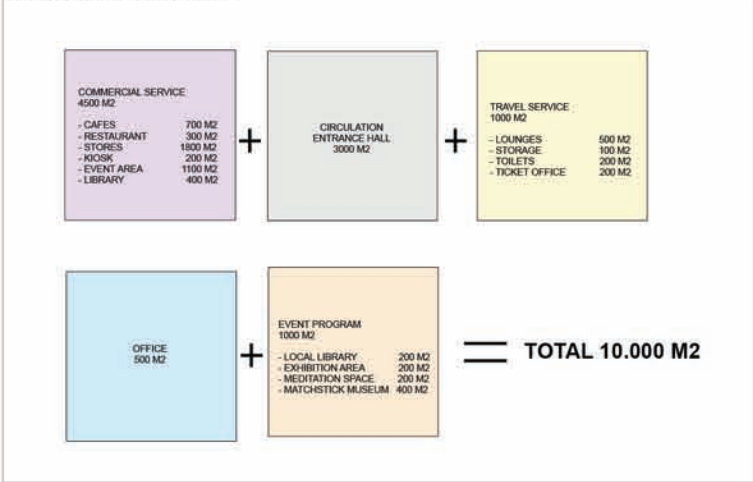


PROGRAM

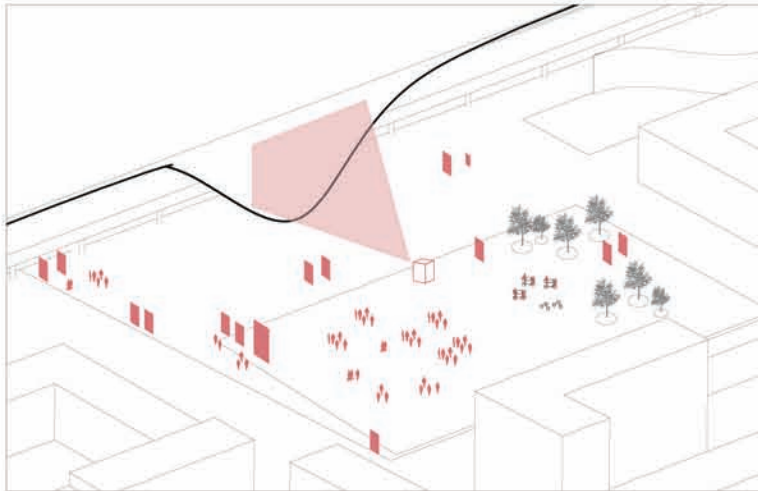
The train station is surround by the housing on the north side. This building are made with woods materials (column, beam, slab). On the south side, the train station hall continue with the park. The bike and car service are place on the last side.



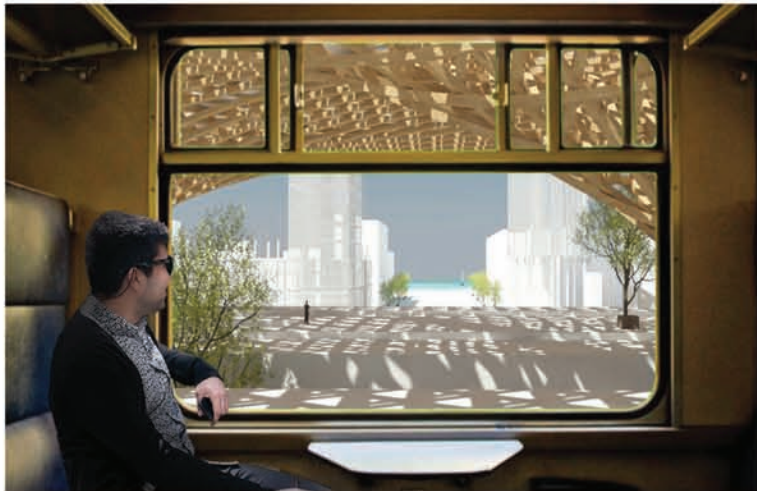
VIEW FROM THE PLATFORMS



GLOSS FLOOR AREA TRAIN STATION



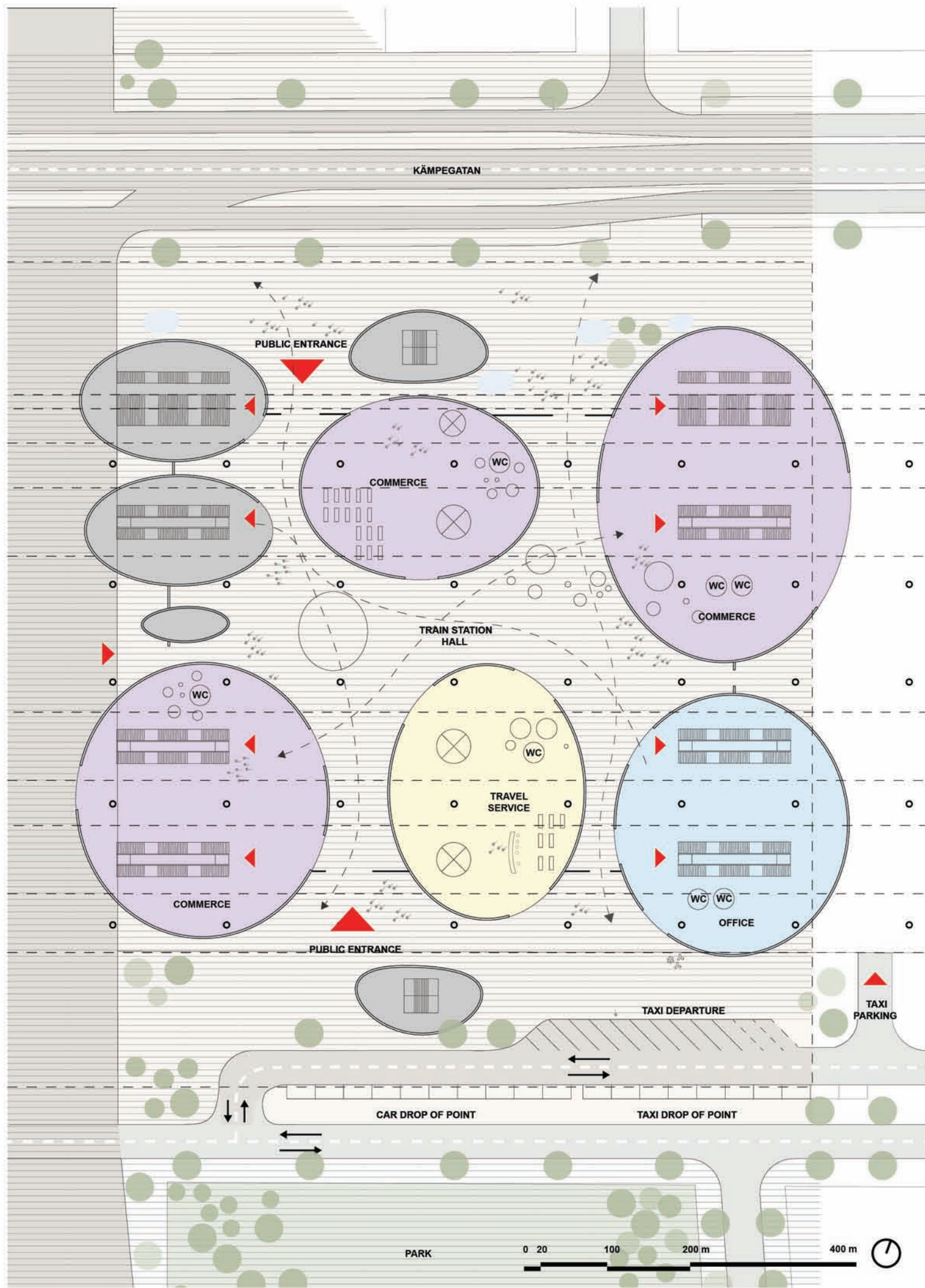
THE STRUCTURE AS SUPPORT FOR ART AND EVENTS



VIEW FROM THE TRAIN CAR ON THE LAKE MUNKSJÖN



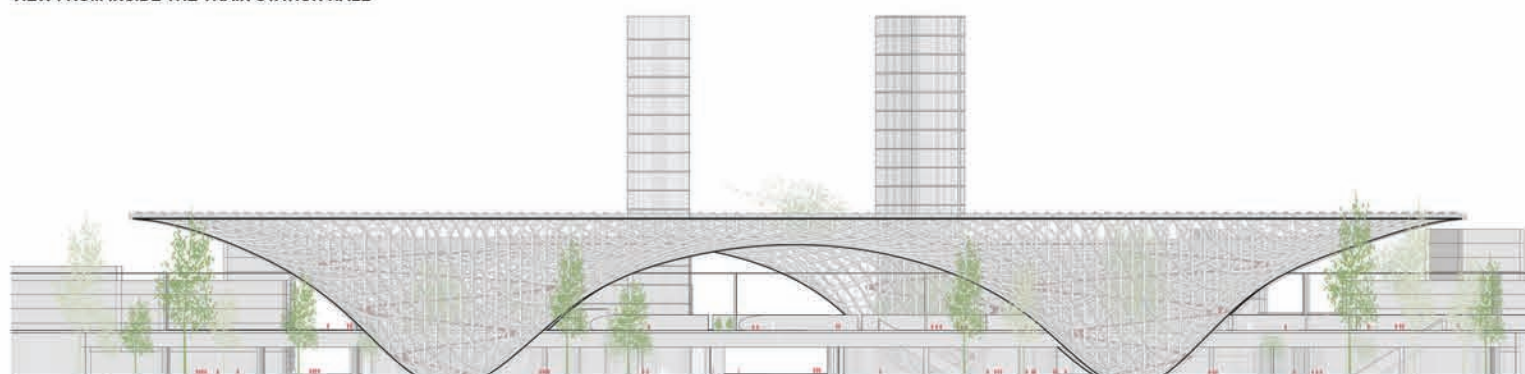
VIEW ON THE RAMP, INSIDE THE STRUCTURE



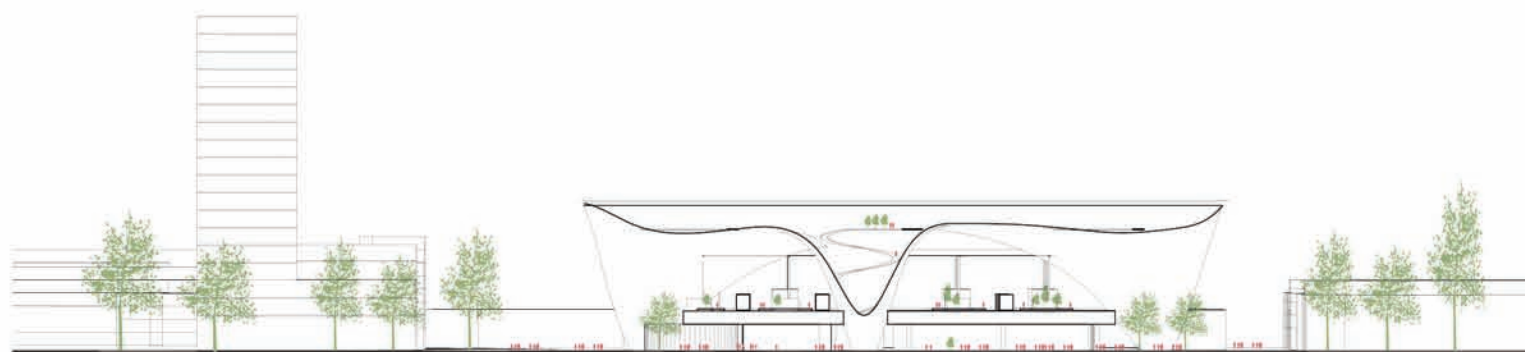
VIEW FROM SÖDRA MUNKSJÖN



VIEW FROM INSIDE THE TRAIN STATION HALL



ELEVATION 1.800



SECTION 1.800

